

STATE OF SOUTH CAROLINA  
REGISTERED ARCHITECT  
CORPORATE SEAL  
PROJECT TITLE

MIDLANDS TECHNICAL COLLEGE  
MTC - CET FLOORING REPLACEMENT  
151 POWELL RD., COLUMBIA, SC 29203

CONDITIONS OF USE  
THIS DRAWING AND THE DESIGN THEREON ARE THE PROPERTY OF QUACKENBUSH ARCHITECTS + PLANNERS.  
THE REPRODUCTION, COPYING, OR USE OF THIS DRAWING WITHOUT WRITTEN CONSENT OF QUACKENBUSH ARCHITECTS + PLANNERS IS PROHIBITED AND AN INFRINGEMENT WILL BE SUBJECT TO LEGAL ACTION.  
PHASE  
BID SET  
ISSUE DATE 10.27.2022  
PROJECT NO. 22.305.02  
STATE PROJECT NO. H59-N179-CL  
REVISION DATE  
1 ADDENDUM 1 11.10.2022

TITLE  
FINISH FLOOR PLANS & FINISH MATERIALS

SHEET NO.  
**A-701**

**GENERAL FINISH NOTES**

- A. WHERE SPECIFIC PRODUCTS ARE INDICATED, ITEM DESIGNATION INCORPORATES QUALITY AESTHETIC APPEARANCE. SEE SPECIFICATIONS FOR EQUAL MANUFACTURERS PER PRODUCT TYPE INDICATED. ACTUAL COLOR SELECTION MAY VARY PER BIDDING OUTCOME, DEPENDING ON LOCATION OF ITEM. ALTERNATES SHALL MATCH IN COLOR, TEXTURE, AS WELL AS PERFORMANCE CRITERIA, AS APPROVED BY ARCHITECT.
- B. WHERE FINISH SCHEDULES INDICATE MULTIPLE COLORS / PATTERNS OF A PARTICULAR FINISH, SEE REMARKS AND FINISH DRAWINGS / ELEVATIONS FOR COMPLETE DESIGNATIONS, LAYOUT AND DIMENSIONS. SEE ENLARGED PLANS FOR REFERENCES.
- C. SCHEDULED BASE SHALL WRAP CORNERS AT DOORS & WINDOWS & RETURN TO JAMB, UNLESS NOTED OTHERWISE.
- D. SCHEDULED FLOOR FINISHES SHALL TERMINATE AT THE CENTER OF THE DOOR(S) IN THE CLOSED POSITION WHEN FLOOR FINISH CHANGES MATERIAL OR COLOR. SCHEDULED FLOOR FINISH PATTERN SHALL EXTEND AND ALIGN AT DOORS IF SAME MATERIAL EXTENDS BETWEEN TWO ADJACENT ROOMS.
- E. SCHEDULED FLOOR FINISHES SHALL EXTEND CONTINUOUSLY UNDERNEATH BASE CABINETS AND OTHER SEMI-PERMANENT FLOOR MOUNTED ITEMS.
- F. PROVIDE SELF-LEVELING FLOOR LEVELER AND/OR PATCHING MATERIALS TO MAINTAIN SUBSTRATE LEVELNESS AS REQUIRED BY FLOORING MANUFACTURER AND AS REQUIRED TO MAINTAIN ACCESSIBILITY DIMENSIONS AT FLOOR TRANSITIONS.
- G. PROVIDE RUBBER TRANSITION STRIPS AT ALL CONDITIONS WHERE FLOORING MATERIALS CHANGE IN AREA OF WORK. ALL TRANSITION STRIPS SHALL MEET ADAAG.
- H. PREPARE ALL EXISTING SURFACES AS REQUIRED TO RECEIVE NEW FINISHES AS SCHEDULED.
- I. ALL STAIR LANDING (INCLUDING INTERMEDIATE LANDINGS) FINISH FLOORING SHALL BE LVT-1.
- J. ALL STAIR TREAD FINISH FLOORING SHALL BE LVT-2.

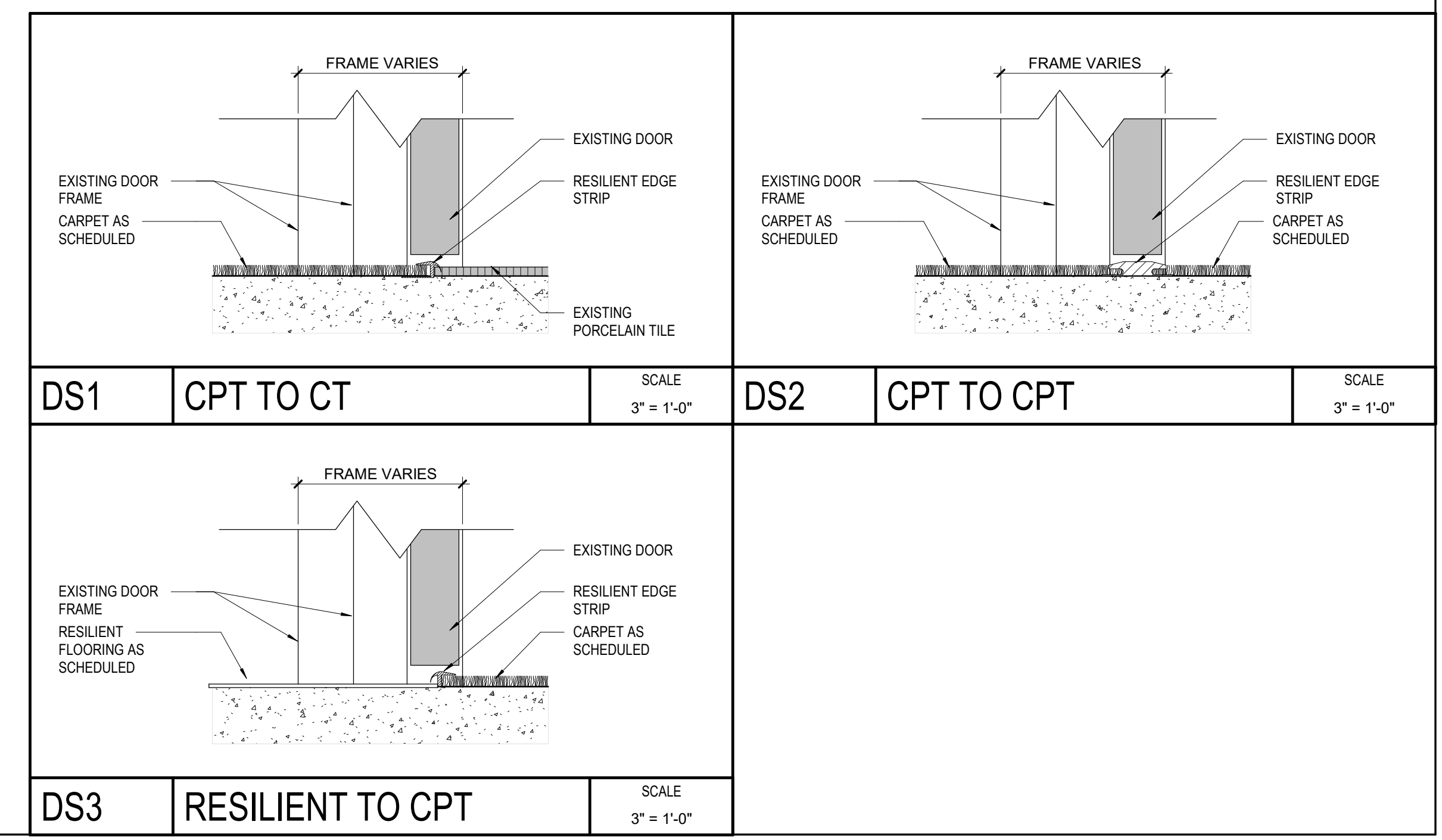
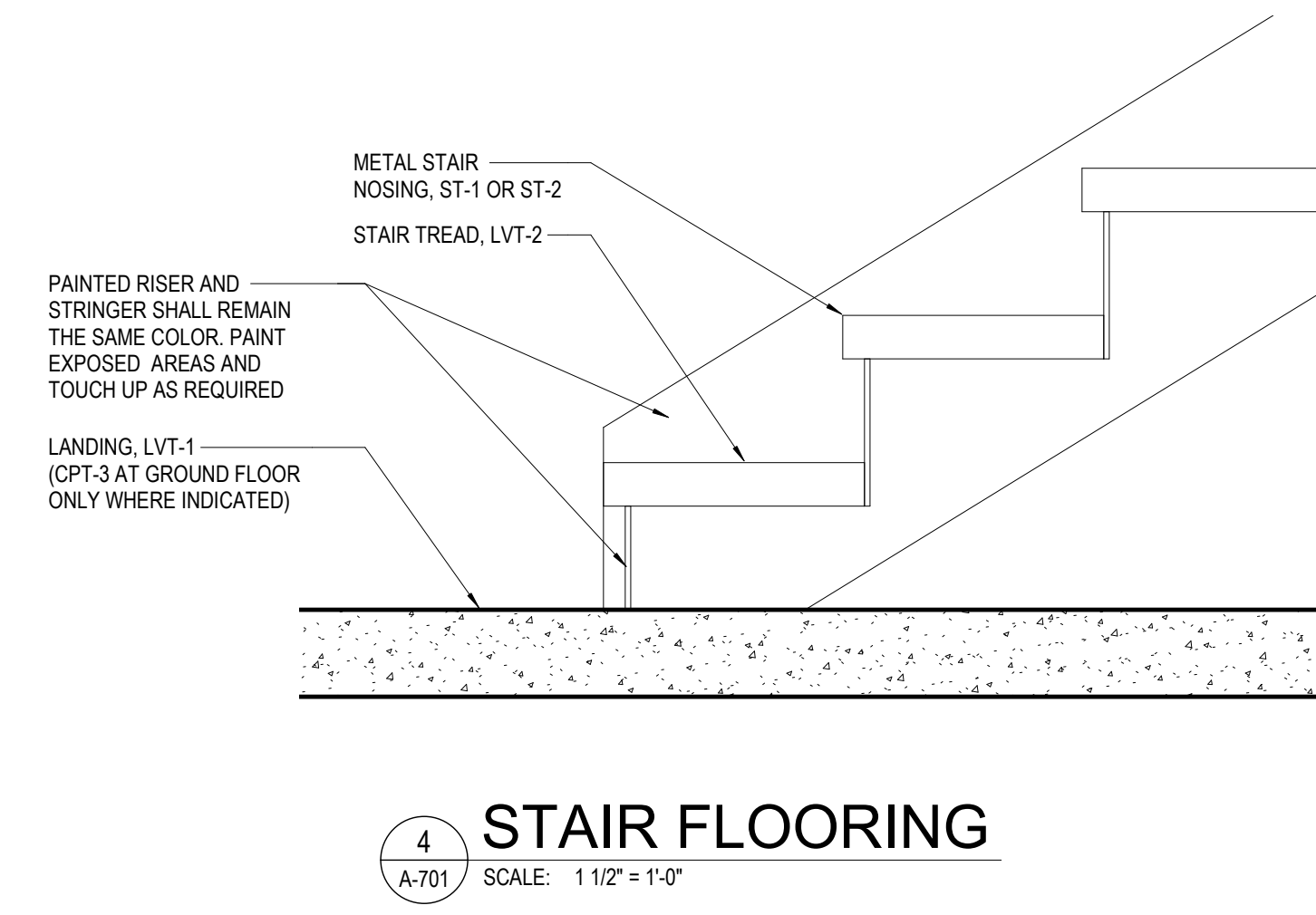
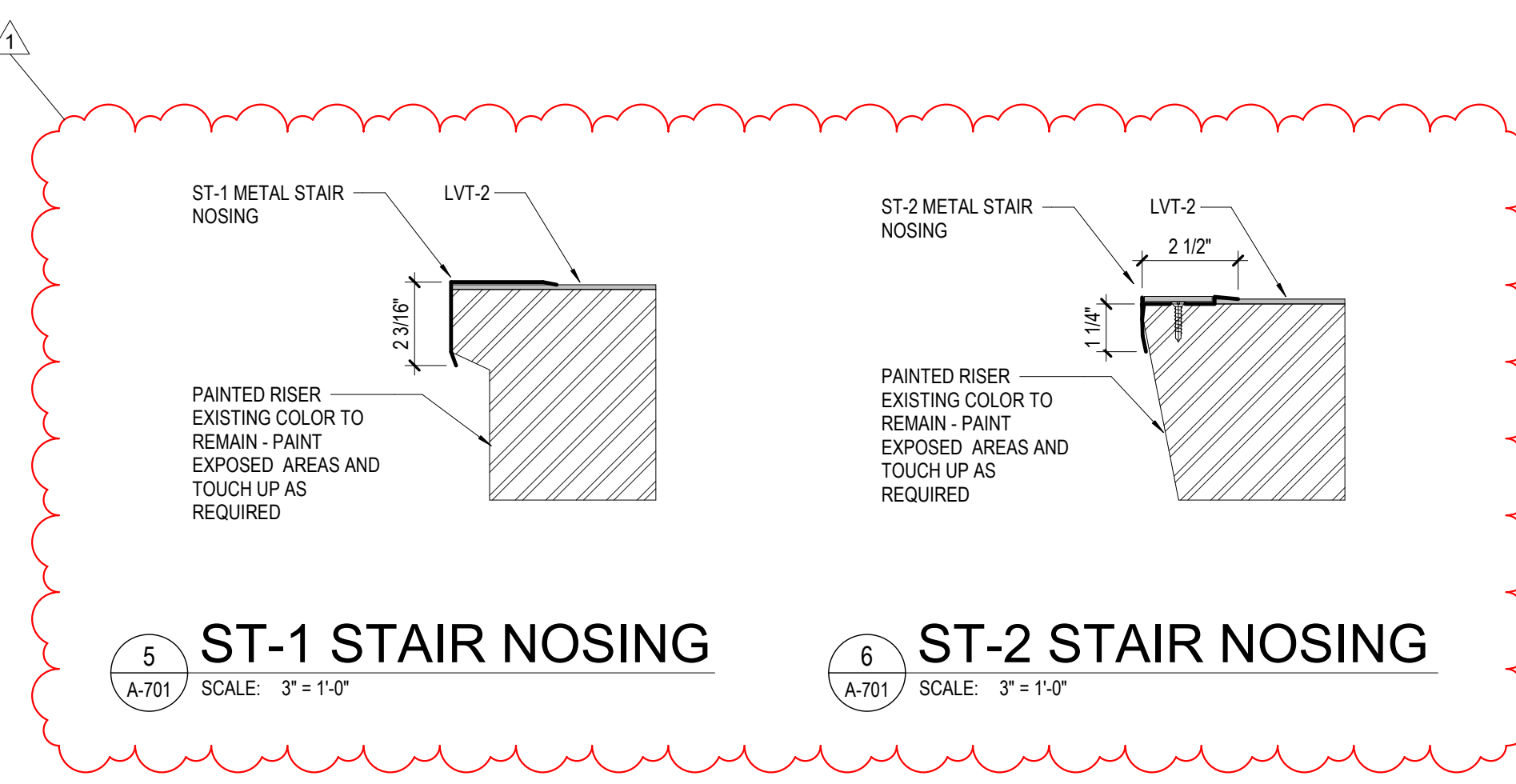
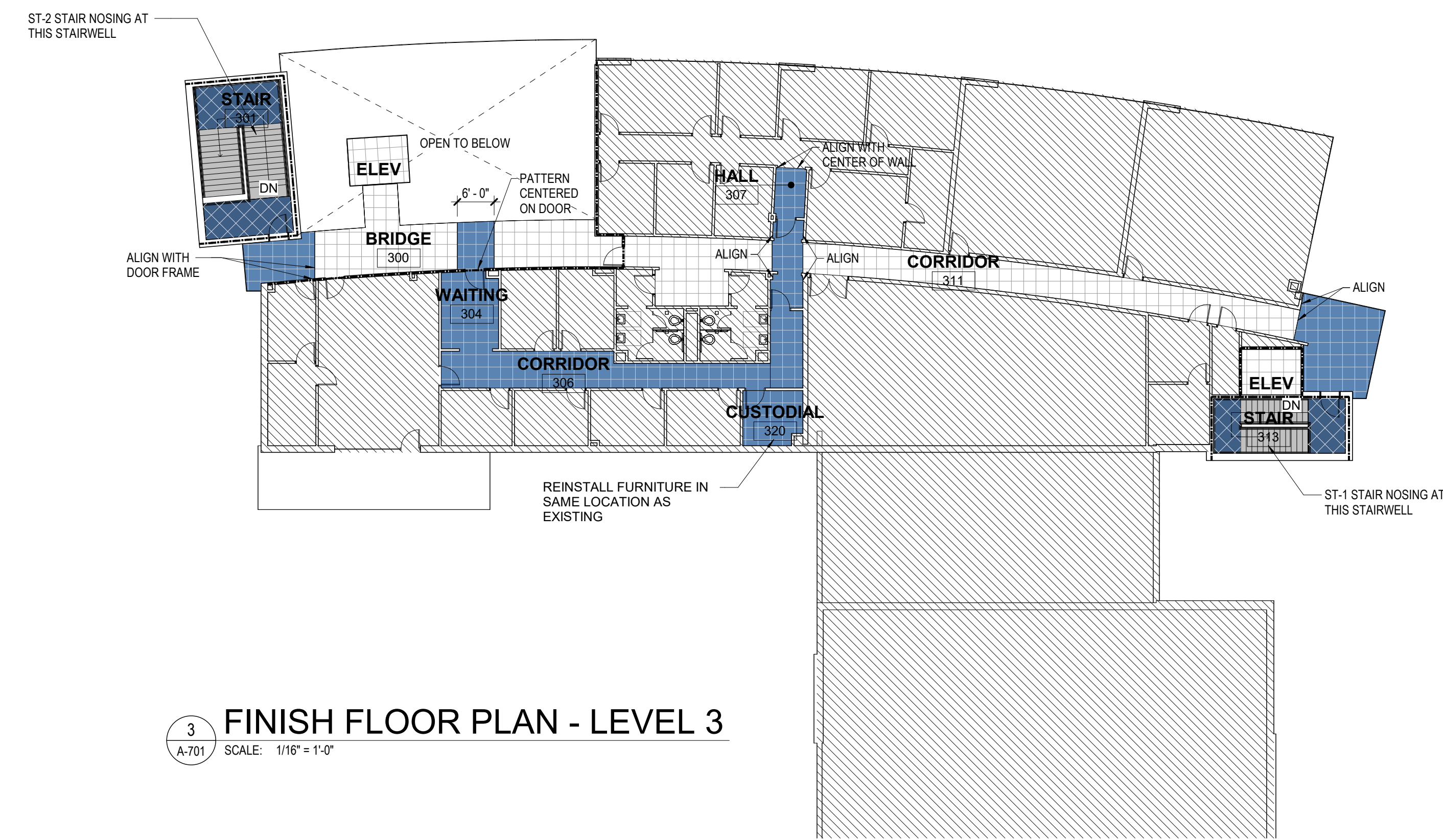
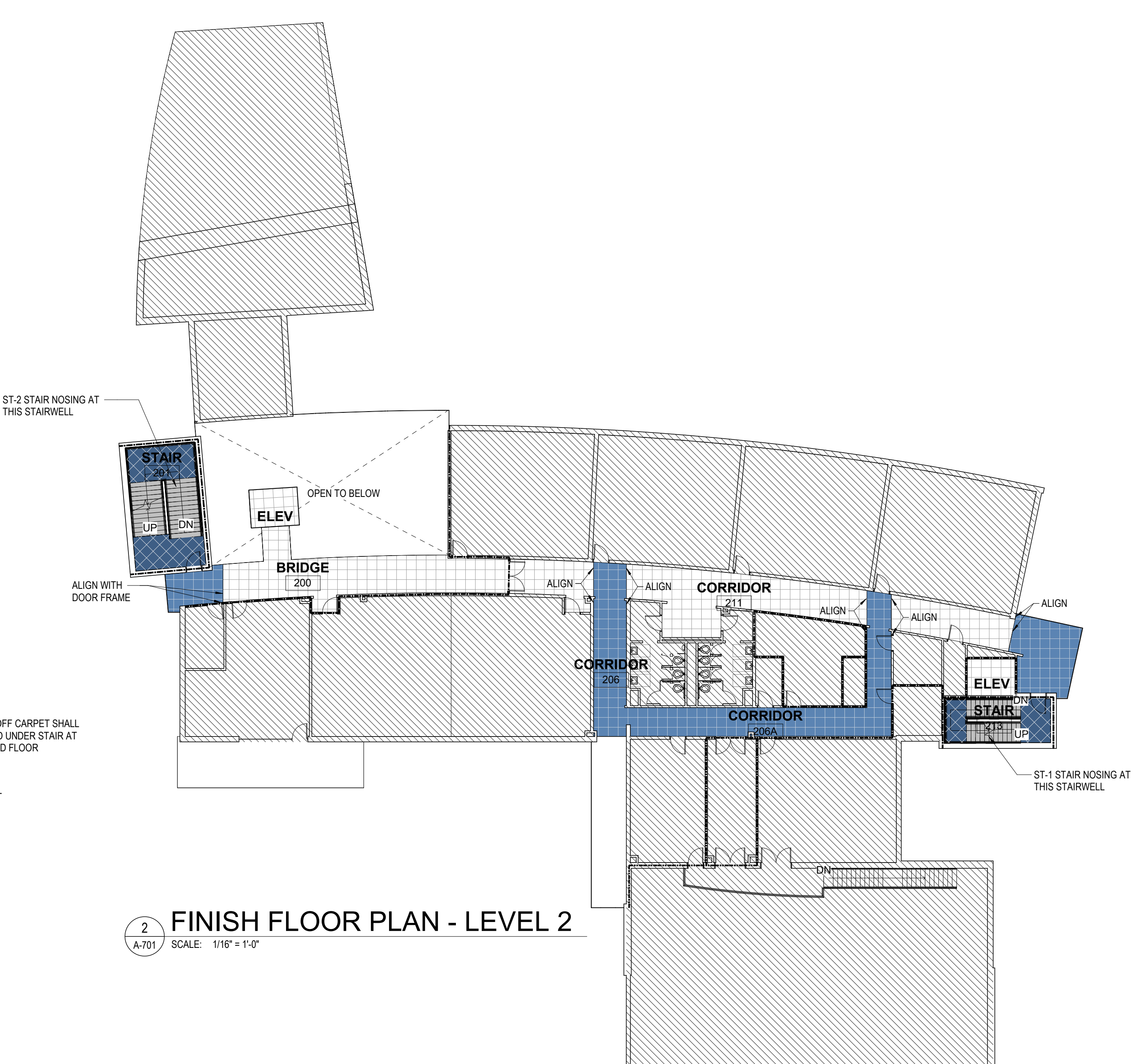
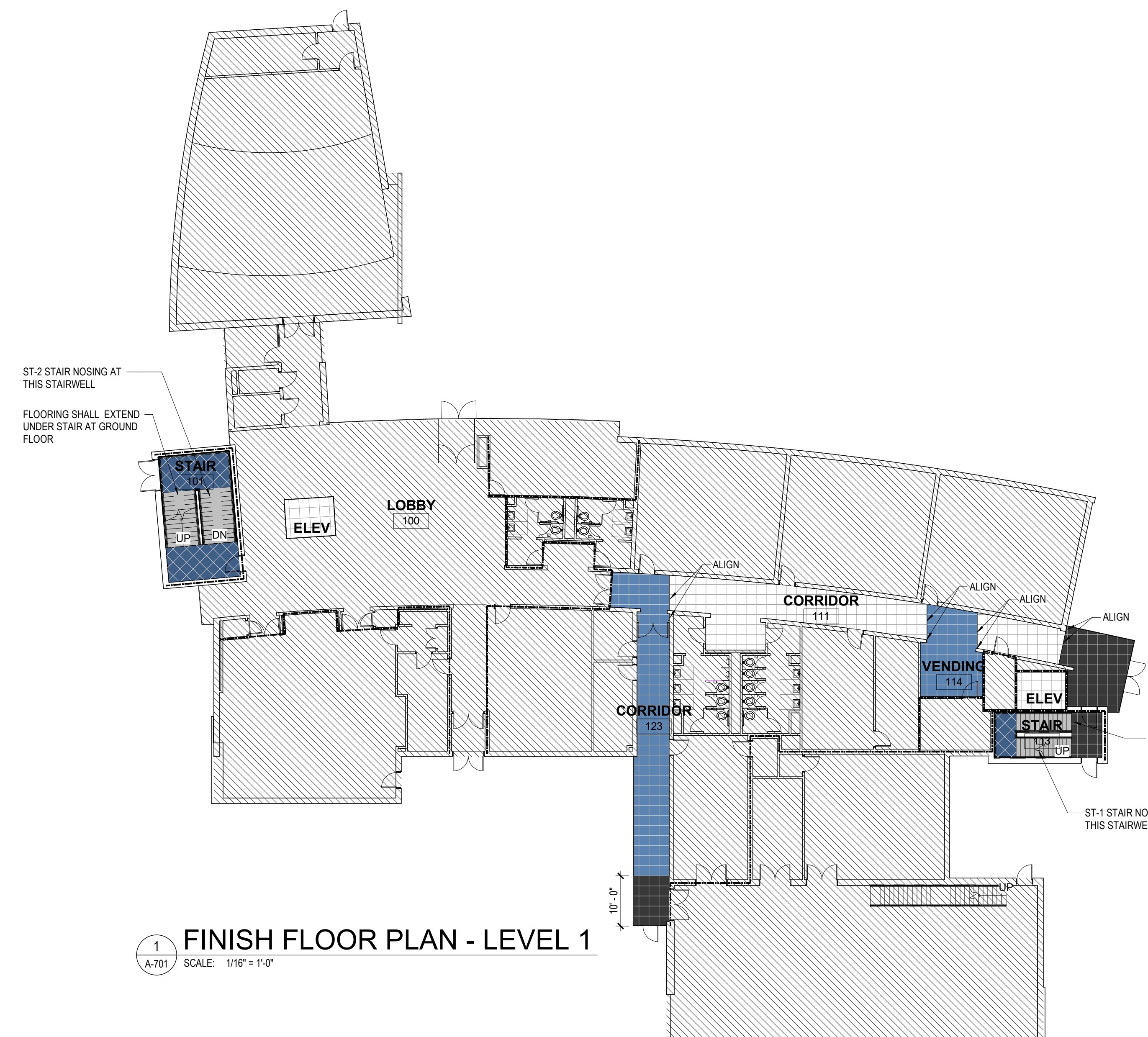
**FINISH FLOOR LEGEND**

	AREA OF WORK NOT IN SCOPE
	CPT-1
	CPT-2
	CPT-3
	LVT-1
	LVT-2

NOTE: ORIENTATION OF HATCH DOES NOT INDICATE DIRECTION OF CARPET/LVT FINISHING

**FINISH MATERIALS**

<b>CARPET TILE (CPT)</b>	<b>LUXURY VINYL TILE (LVT)</b>
<b>CPT-1</b> MANUFACTURER: KINETECS PRODUCT: PUT A CORK IN IT 1830 STYLE: 2196 JUG COLOR: 24" X 24" SIZE: QUARTER TURN INSTALLATION: QUARTER TURN	<b>LVT-1</b> MANUFACTURER: MANNINGTON PRODUCT: ACTIVE LINES STYLE: SHIFT COLOR: ZOOM BLUE ALS303 SIZE: 18" X 18" INSTALLATION: ASHLAR ON LANDINGS
<b>CPT-2</b> MANUFACTURER: KINETECS PRODUCT: PROPEL II 1817 STYLE: 2375 CATAPULT COLOR: 24" X 24" SIZE: QUARTER TURN INSTALLATION: QUARTER TURN	<b>LVT-2</b> MANUFACTURER: MANNINGTON PRODUCT: ACTIVE LINES STYLE: SHIFT COLOR: POP ALS401 SIZE: 6" X 36" INSTALLATION: STAGGERED ON STAIR TREADS
<b>CPT-3</b> MANUFACTURER: J+J PRODUCT: WALK-OFF MODULAR STYLE: INCOGNITO 7069 COLOR: INTELLIGENCE 1841 SIZE: 24" X 24" INSTALLATION: QUARTER TURN	<b>STAIR NOSING (ST)</b>
<b>RUBBER BASE (RB)</b>	<b>ST-1</b> MANUFACTURER: KUBERIT OR EQUAL TYPE: METAL STYLE: KUBERIT KS-K-550-A1-U
<b>RB-1</b> MANUFACTURER: MATCH EXISTING STYLE: 4" COVE COLOR: MATCH EXISTING	<b>ST-2</b> MANUFACTURER: TREADSAFE OR EQUAL TYPE: METAL WITH ANTI-SLIP INSERT STYLE: AA106 WITH 107 CHARCOAL GREY INSERT
	<b>ST-3</b> NOT USED



**NOTE: DRAWING CONTAINS COLOR AND SHALL BE VIEWED/PRINTED IN COLOR FOR COMPLETE INFORMATION.**