

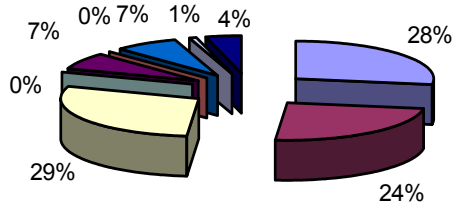
FINANCIAL

DATA



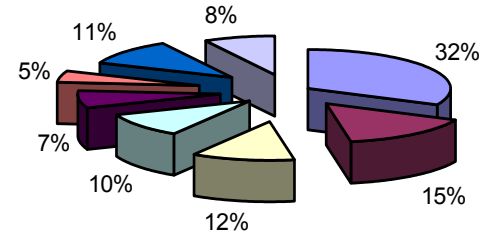
REVENUE AND EXPENSES BY SOURCE

FY2005 REVENUE



- Tuition and Fees
- Grants and Contracts
- Auxiliary Enterprises
- Local Appropriations
- Other Sources
- State Appropriations
- Federal Appropriations
- Independent Operations
- Investment Income

FY2005 EXPENSES



- Instruction
- Student Services
- Operation & Maintenance
- Scholarships
- Academic Support
- Institutional Support
- Depreciation
- Auxiliary Enterprises

Revenue by Source FY2004 and FY2005

	FY2004	FY2005
Tuition and Fees	\$21,447,627	22,071,267
State Appropriations	\$18,323,689	19,014,685
Grants and Contracts	\$20,561,140	23,124,182
Federal Appropriations	0	0
Auxiliary Enterprises	\$5,586,006	5,909,485
Independent Operations	0	0
Local Appropriations	\$5,758,676	5,915,254
Investment Income	\$256,266	664,880
Other Sources	\$2,314,212	3,359,118
Total Revenue	\$74,247,616	80,058,871

Expense by Category FY2004 and FY2005

	FY2004	FY2005
Instruction	\$23,860,773	24,500,016
Academic Support	\$8,441,232	11,602,944
Student Services	\$8,359,302	8,860,551
Institutional Support	\$8,075,989	7,837,847
Operation & Maintenance	\$5,654,610	5,545,289
Depreciation	\$2,731,849	3,585,235
Scholarships	\$7,605,148	8,266,923
Auxiliary Enterprises	\$5,943,317	6,174,328
Total Expenses	\$70,672,220	76,373,133

Source: GASB & IPEDS Finance Report June 2005