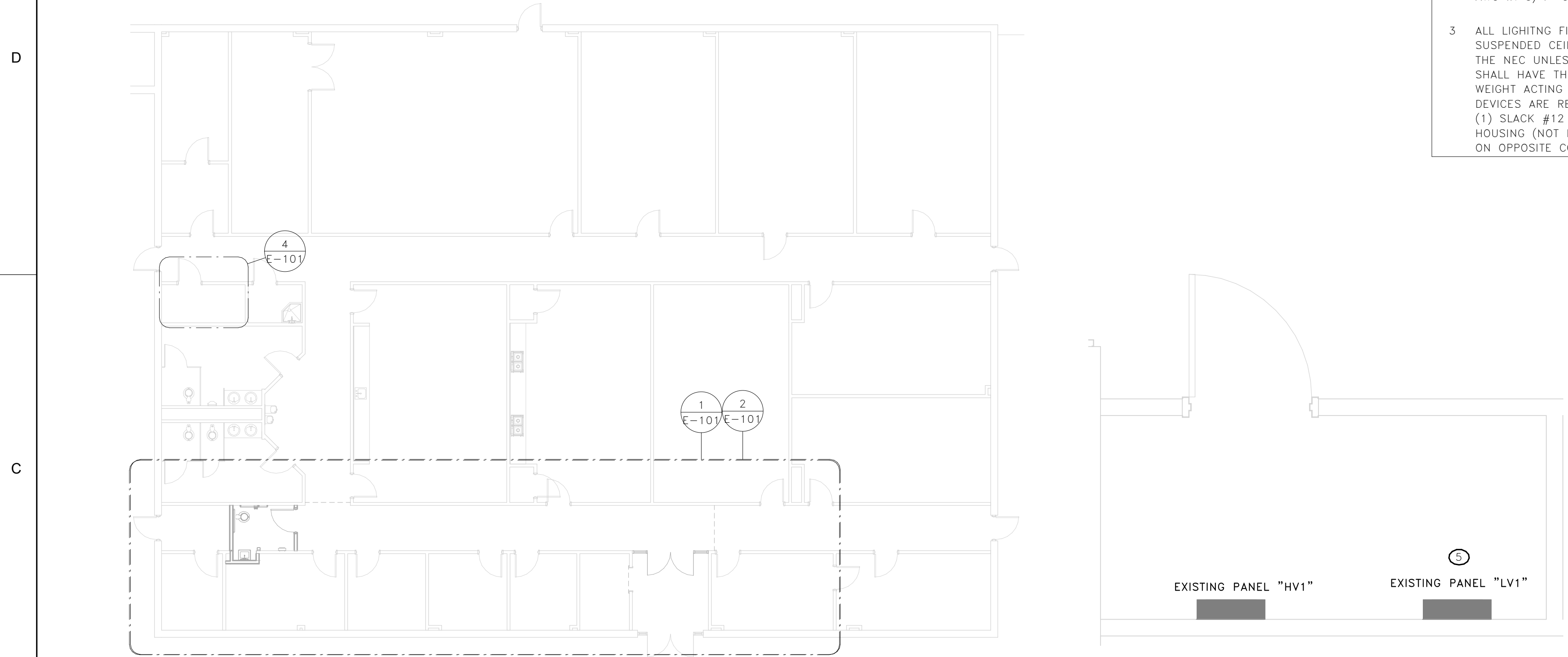


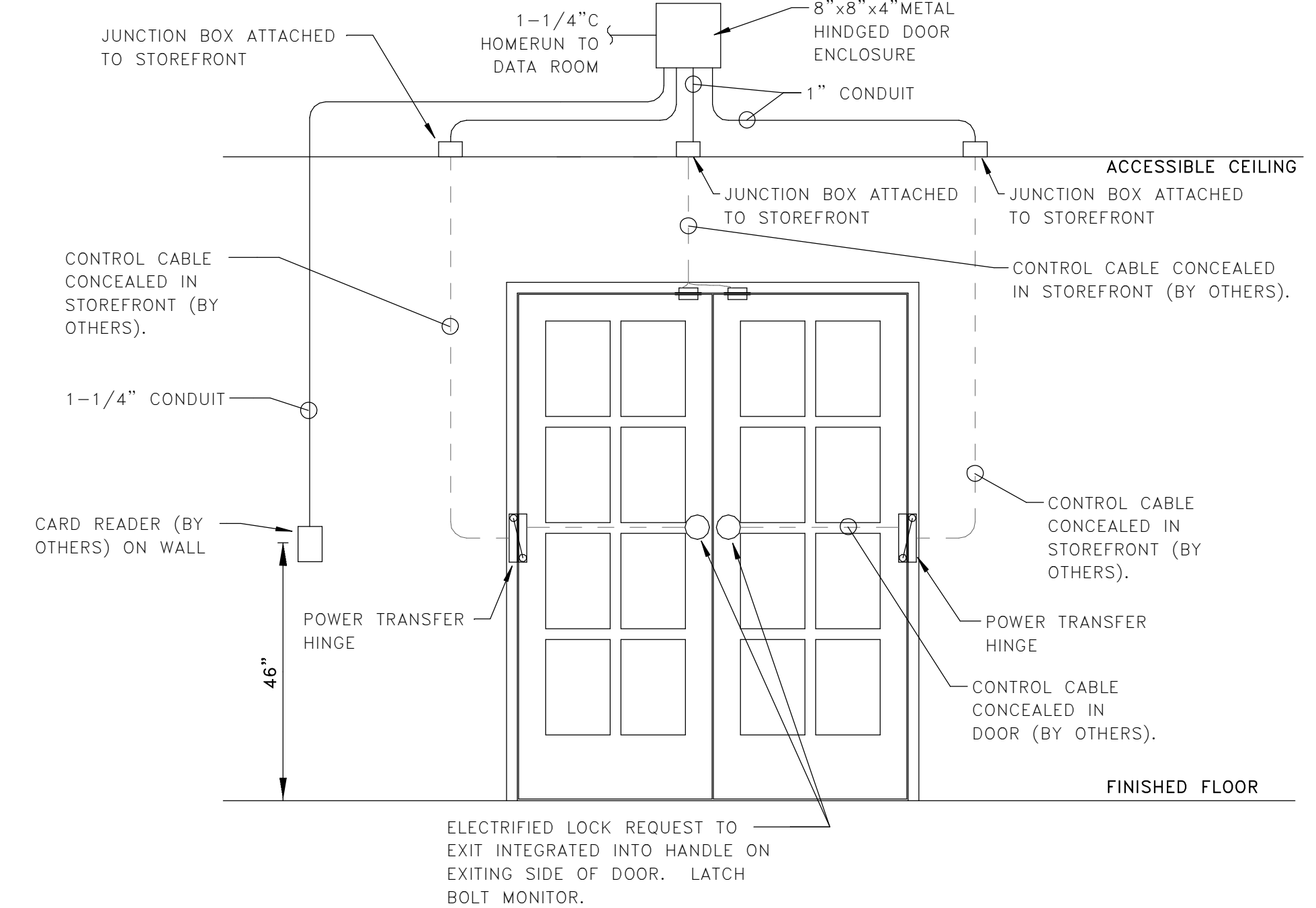
- GENERAL NOTES**
- 1 EXTEND EXISTING CORRIDOR LIGHTING CIRCUIT IN PANEL 'HV1' TO LIGHT FIXTURES SHOWN ON THIS SHEET.
  - 2 BRANCH CIRCUIT WIRING SHALL BE COPPER (THHN/THWN-2) NO. 12 AWG IN 3/4" CONDUIT UNLESS NOTED OTHERWISE.
  - 3 ALL LIGHTING FIXTURES SHALL BE POSITIVELY ATTACHED TO THE SUSPENDED CEILING SYSTEM BY MECHANICAL MEANS AS SPECIFIED IN THE NEC UNLESS INDEPENDENTLY SUPPORTED. THE ATTACHMENT DEVICE SHALL HAVE THE CAPACITY TO SUPPORT 100% OF THE LIGHT FIXTURE WEIGHT ACTING IN ANY DIRECTION. A MINIMUM OF TWO ATTACHMENT DEVICES ARE REQUIRED FOR EACH FIXTURE. FIXTURES SHALL HAVE TWO (1) SLACK #12 GAUGE SAFETY WIRE CONNECTED FROM THE FIXTURE HOUSING (NOT DETACHABLE END PLATES) TO THE STRUCTURE ABOVE ON OPPOSITE CORNERS OF FIXTURES.

- KEY NOTES**
- 1 DISCONNECT SWITCHLEG FROM EXISTING FIXTURES AND RECONNECT TO NEW FIXTURE PROVIDED AS SHOWN.
  - 2 PROVIDE WATTSTOPPER LMPC-100 SERIES SENSOR (OR EQUAL) FOR CONTROL OF CORRIDOR LIGHTING.
  - 3 PROVIDE WATTSTOPPER LMPC-100 SERIES SENSOR (OR EQUAL) FOR CONTROL OF RESTROOM LIGHTING. EXISTING EXHAUST FAN SHALL BE DISCONNECTED FROM EXISTING MOTION SENSOR CONTROLS IN EXISTING RESTROOMS AND TIED INTO BUILDING BMS SYSTEM. COORDINATE WORK WITH MECHANICAL CONTRACTOR.
  - 4 PROVIDE 1" CONDUIT FROM J-BOX ABOVE ACCESS CONTROL DOORS TO 1-GANG BOX FOR DOOR RELEASE BUTTON (BY OTHERS). COORDINATE EXACT LOCATION FOR DOOR RELEASE WITH OWNER PRIOR TO ROUGH-IN.
  - 5 REPLACE EXISTING 1-POLE, 20A BREAKER IN PANEL 'LV1' LABELED AS "BROKEN" WITH NEW TO SUPPORT ACCESS CONTROL DOORS. PROVIDE 2-#12, #12G IN 3/4" CONDUIT TO ACCESS CONTROL DOOR POWER SUPPLY.

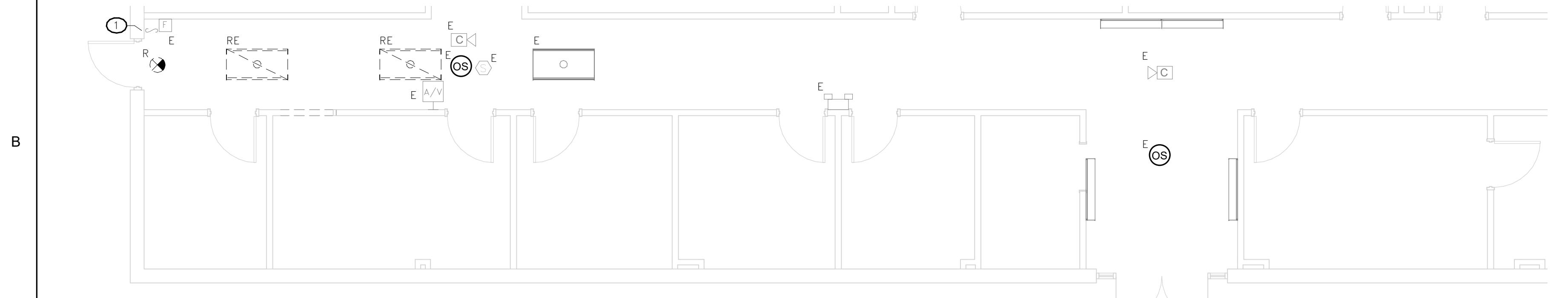


**3 OVERALL PLAN**  
E-101 SCALE: 3/32" = 1'-0"

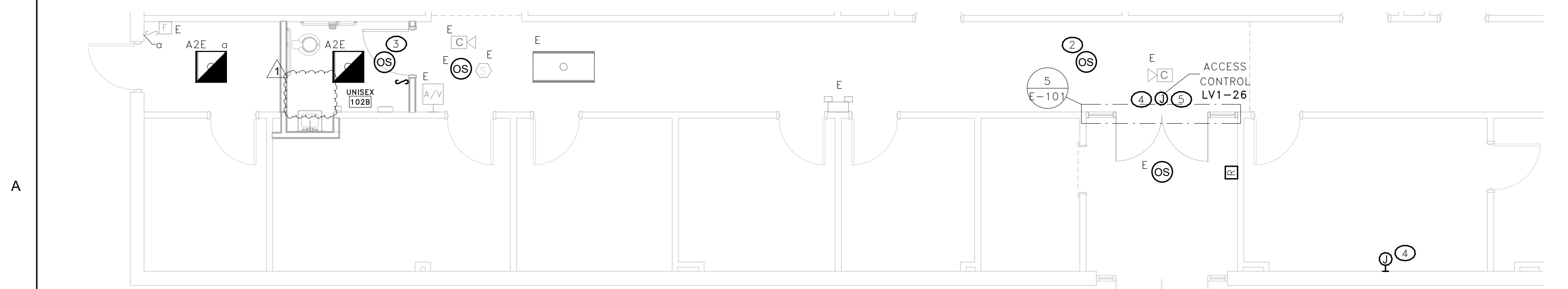
**4 ELECTRICAL ROOM**  
E-101 SCALE: 1/2" = 1'-0"



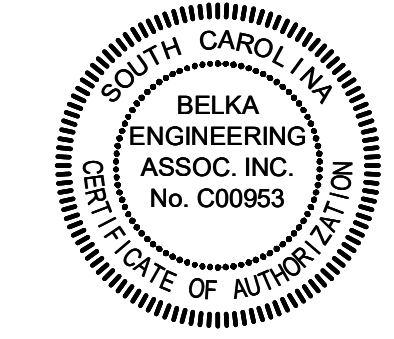
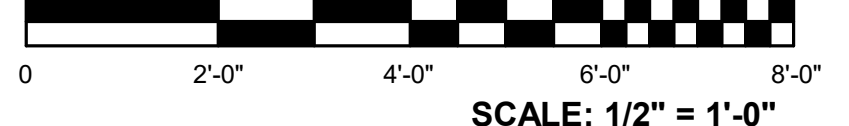
**5 ACCESS CONTROL - DOUBLE DOOR DETAIL**  
E-101 NOT TO SCALE



**1 ELECTRICAL DEMOLITION PLAN**  
E-101 SCALE: 3/16" = 1'-0"



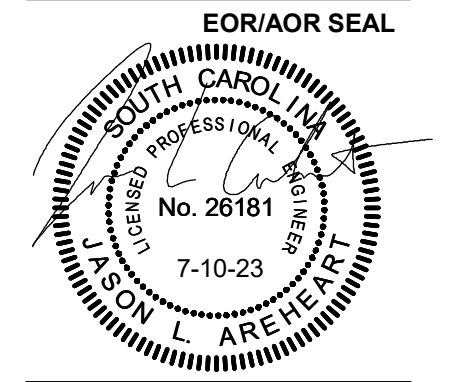
**2 ELECTRICAL RENOVATION PLAN**  
E-101 SCALE: 3/16" = 1'-0"



**BELKA**  
ENGINEERING ASSOCIATES, INC.  
2519A PLATT SPRINGS RD | WEST COLUMBIA, SC  
(803) 731-0650 Office | (803) 467-7657 Cell  
CONTACT: JASON AREHEART  
JAREHEART@BEA-Consulting.com



**POND**  
1301 Gervais Street,  
Suite 1300  
Columbia  
SC 29201  
Copyright © 2023 by Pond & Company. All rights reserved. No copying or duplication of these documents is allowed without the expressed written agreement of Pond & Company.  
SC LICENSE NUMBERS:  
ARCHITECTURE: B-98107  
ENGINEERING: C01806



**MIDLANDS**  
TECHNICAL COLLEGE  
PROJECT NAME

**MTC - SPRINDALE HALL RESTROOM - AIRPORT CAMPUS H59-N241-CL**

1260 LEXINGTON DRIVE  
COLUMBIA, SC 29170  
DRAWING ISSUE

DATE	DESCRIPTION	MARK
07/10/23		1

DESIGNED BY: DMS  
DRAWN BY: DMS  
CHECKED BY: JLA  
SUBMITTED BY: JLA  
DATE: JUNE 7, 2023  
PROJECT #: 1230236

**SHEET TITLE**  
ELECTRICAL PLANS

**SHEET NUMBER**  
E-101

ORIGINAL SHEET SIZE:  
22" X 34"

7/10/2023 10:07:31 AM BIM 360://1230236 MTC Springdale Building/PD22301\_MTC Springdale Hall Restroom\_ELEC\_21.rvt