

DELETED FAN SCHEDULE  
DELETE FANS FROM SUBMITTAL REQUIREMENTS

### GRILLE AND DIFFUSER SCHEDULE

MARK	SERVICE	NECK SIZE	MAX CFM	RUNOUT SIZE	REMARKS
①	SUPPLY	6"φ	120	6"φ	W/ BUTTERFLY DFR
⑥	EXHAUST	6"φ	63	6"φ	W/ BUTTERFLY DFR
GRILLE/DIFFUSER	CEILING TYPE	TITUS #	MODEL NO.	MATERIAL	
SQUARE SUPPLY	LAY-IN	PA8-3	(PERFORATED, T-BAR)	POWDER COATED STEEL	
SQUARE SUPPLY	GYP. BD.	PA8-1	(PERFORATED)	POWDER COATED STEEL	
SQUARE EXHAUST	LAY-IN	PAR-3	(PERFORATED, T-BAR)	POWDER COATED STEEL	
SQUARE EXHAUST	GYP. BD.	PAR-1	(PERFORATED)	POWDER COATED STEEL	

\* OR EQUAL BY PRICE, METALAIR, NAILOR, KREUGER, OR APPROVED EQUAL

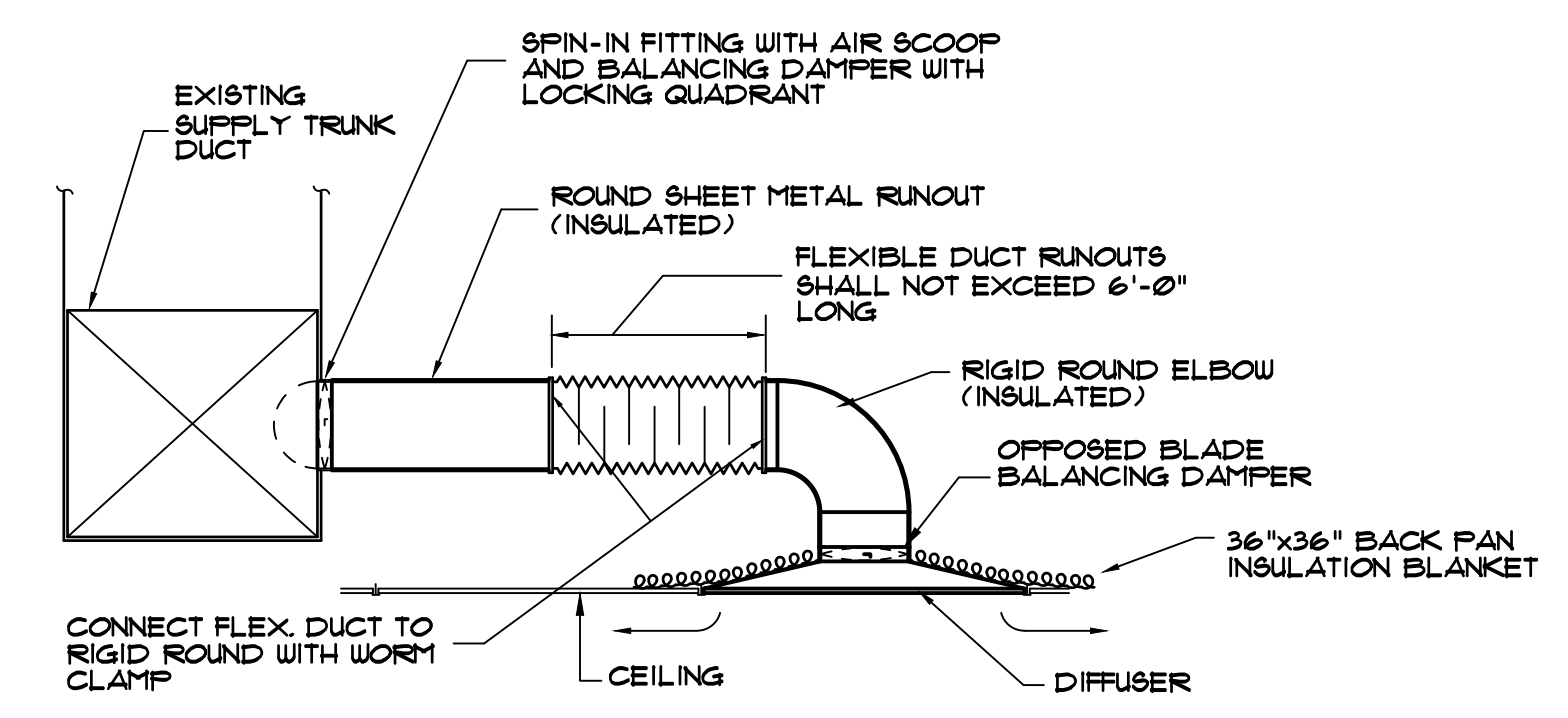
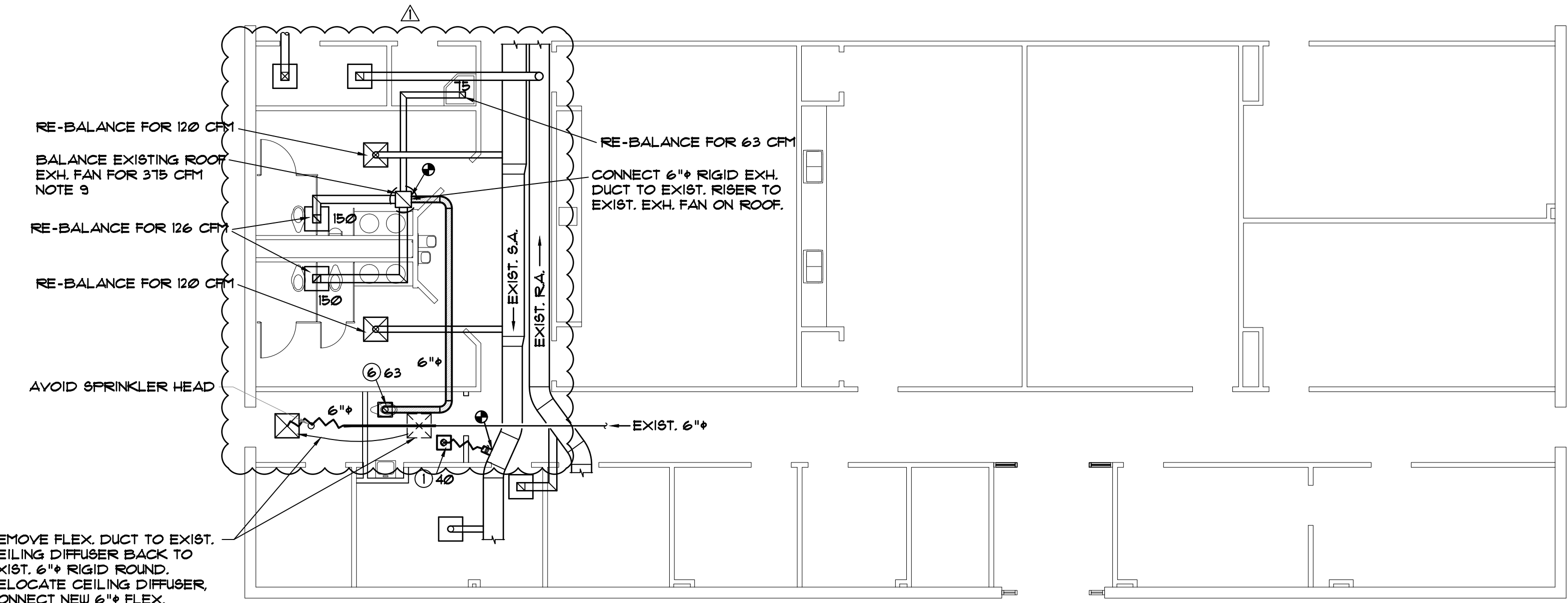
**NOTES:**

- GRILLE AND DIFFUSER LOCATIONS SHOWN ON FLOOR PLANS ARE APPROXIMATE, SEE ARCHITECTURAL REFLECTED CEILING PLAN FOR EXACT LOCATION.
- GRILLES AND DIFFUSERS SHALL MATCH CEILING TYPE, SEE ARCHITECTURAL DRAWINGS FOR CEILING TYPE.
- GRILLE AND DIFFUSER COLORS SHALL BE SELECTED BY ARCHITECT, SUBMIT COLOR SAMPLES TO ARCHITECT.

- ### NOTES
- DO NOT SCALE DRAWINGS, ROUGH FROM ARCHITECTURAL, EQUIPMENT MANUFACTURER'S DRAWINGS, AND EXISTING CONDITIONS.
  - DIMENSIONS ARE IN INCHES UNLESS OTHERWISE NOTED. DUCT SIZES SHOWN ON DRAWINGS ARE INTERIOR DIMENSIONS.
  - WHENEVER THE WORD "PROVIDE" IS USED IT SHALL MEAN FURNISH AND INSTALL COMPLETE AND READY FOR USE.
  - PROVIDE GLASSFAB AND MASTIC ON ALL DUCT INSULATION, SEE SPECIFICATIONS. DUCT TAPE WILL NOT BE ACCEPTED.
  - CONSTRUCT DUCTWORK AS JOB PROGRESSES AND AFTER COORDINATING WITH ALL CONCERNED TRADES AND EXISTING CONDITIONS.
  - SEE SPECIFICATIONS FOR FLEXIBLE DUCT REQUIREMENTS.
  - INSTALLATION OF EQUIPMENT, DUCTWORK, AND PIPING, INCLUDING VIBRATION ISOLATION SHALL COMPLY WITH 2021 INTERNATIONAL BUILDING CODE FOR SEISMIC PROTECTION. SEE SPECIFICATIONS.
  - THE MINIMUM DISTANCE BETWEEN TAKEOFFS ON THE SAME SIDE OF THE DUCTS SHALL BE FOUR (4) TIMES THE DIAMETER OF THE FIRST TAKEOFF.
  - CURRENTLY, EXISTING ROOF EXHAUST FAN STARTS BY MOTION DETECTORS IN MENS AND WOMENS TOILET. DISABLE OR REMOVE AS DIRECTED. CONNECT EXISTING ROOF EXHAUST FAN TO BUILDING MANAGEMENT SYSTEM AND START AND RUN CONTINUOUSLY WHEN 20-TON PACKAGED HEAT PUMP IS SCHEDULED ON.

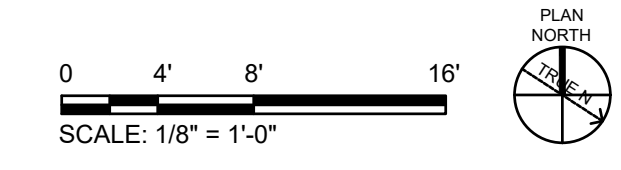
### SYMBOLS

	FLEXIBLE DUCT (6 FT. MAX. LENGTH)
	RIGID ROUND RUNOUT DUCT
	NEW MATERIAL
	EXISTING MATERIALS
CFM	AIR FLOWRATE, CUBIC FEET PER MINUTE
① 120	GRILLE OR DIFFUSER MARK, BALANCING CFM
	SPIN-IN TAKEOFF WITH SCOOP AND DAMPER



### CEILING DIFFUSER INSTALLATION

NOT TO SCALE



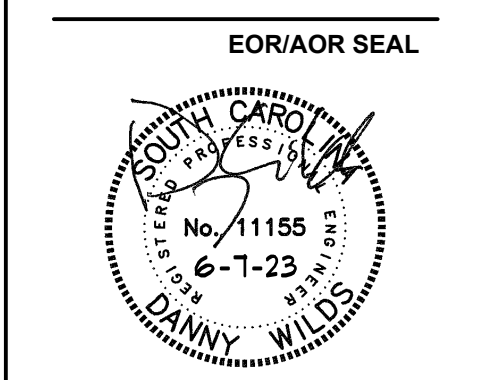
**HVAC FLOOR PLAN**  
SCALE: 1/8" = 1'-0"

REMOVE FLEX. DUCT TO EXIST. CEILING DIFFUSER BACK TO EXIST. 6"φ RIGID ROUND. RELOCATE CEILING DIFFUSER. CONNECT NEW 6"φ FLEX. RUNOUT TO EXIST. 6"φ RIGID RUNOUT. REPAIR DUCT INSULATION TO MATCH EXISTING BALANCE FOR 120 CFM

**POND**  
1301 Gervais Street,  
Suite 1300  
Columbia  
SC 29201

Copyright © 2023 by Pond & Company. All rights reserved. No copying or duplication of these documents is allowed without the expressed written agreement of Pond & Company.

SC. LICENSE NUMBERS:  
ARCHITECTURE: B-98107  
ENGINEERING: C01806



CLIENT INFORMATION  
**MIDLANDS**  
TECHNICAL COLLEGE  
PROJECT NAME

MTC -  
SPRINGDALE  
HALL  
RESTROOM -  
AIRPORT  
CAMPUS  
H59-N241-CL

1260 LEXINGTON  
DRIVE,  
COLUMBIA, SC 29170  
DRAWING ISSUE

DATE  
07/10/23

DESCRIPTION  
APPENDIX ONE

MARK  
△

DESIGNED BY: DW  
DRAWN BY: DW  
CHECKED BY: DW  
SUBMITTED BY: DW  
DATE: JUNE 7, 2023  
PROJECT #: 1230236

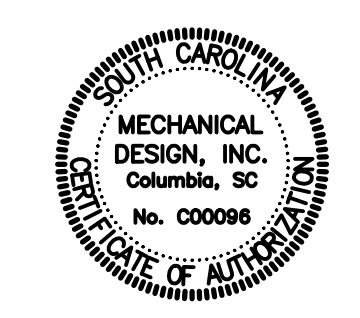
SHEET TITLE

HVAC FLOOR PLAN,  
SCHEDULES AND  
DETAILS

SHEET NUMBER

**M101**

ORIGINAL SHEET SIZE:  
22" X 34"



**MECHANICAL DESIGN, INC.**  
4403 Broad River Road  
Columbia, S.C. 29210  
(803) 731-9834  
danny@mdi9834.com  
CONTACT: Danny Wilds COMM. No. 233899